

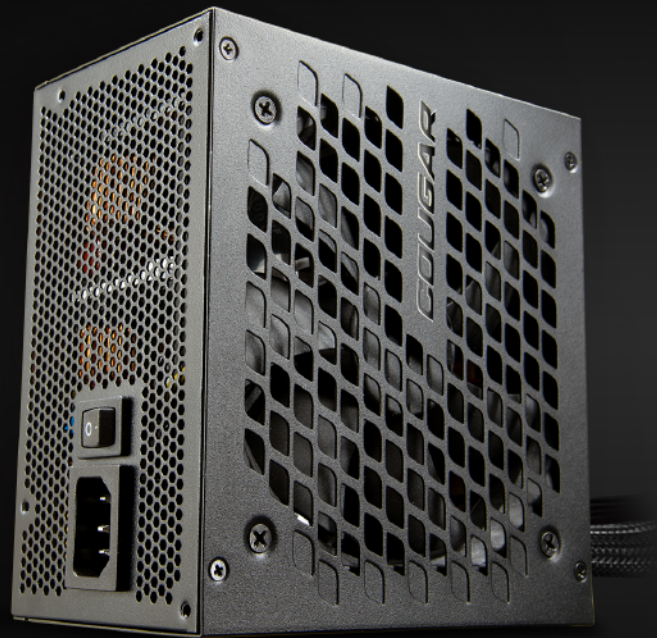


GES 80 PLUS GOLD

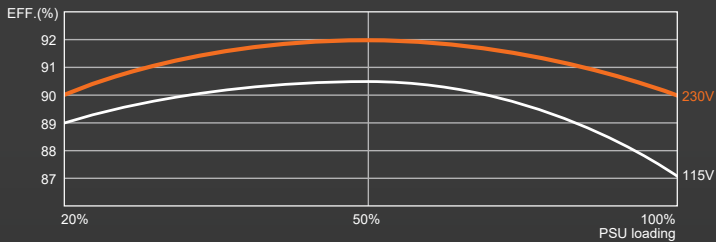
FULL RANGE PERFORMANCE AND STABILITY

550 / 650 / 750

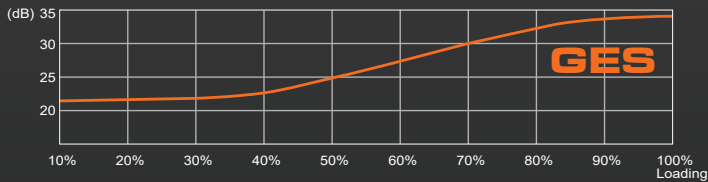
COUGAR GES series is high-quality 80 Plus Gold certified with excellent power delivery, efficiency, silence and durability. It is reliable and durable for those who are looking for a high value power supply.



With 80 Plus Gold certified to provide high efficiency up to 92%



Ultra-Silent COUGAR fan with automatic thermal speed control for an optimal speed-noise ratio.

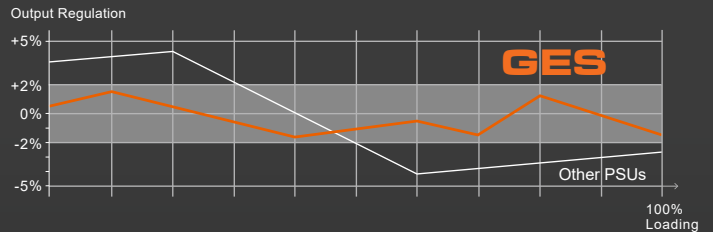


Extremely High Efficiency
Up to 92% of efficiency.

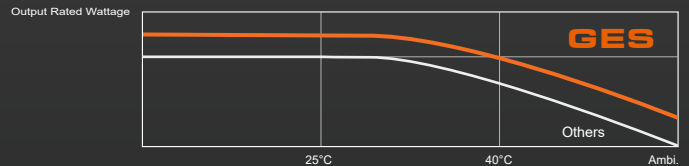
Compatible With The Latest PC Technology
Created for use with current and next-generation multi-core CPU platforms.

Support Multi GPU Technology
Supports PCI Express 4.0 next-generation graphics cards with 8(6+2) pin PCI-E connector.

DC - DC technology to provide improved and stable performance within perfect $\pm 2\%$ regular outputs.



The high-quality MOSFETs and capacitors used in GES allow it to achieve high levels of performance in realistic environments.



Massive Single +12V DC Output
Extreme Performance for Powerful Graphics Systems

Active Power Factor Correction (Active PFC)
PF value up to 99%: Clean and reliable power

Compact Gold PSU Size
Fitting all PC cases.

Full Protection With SCP, OCP, OVP, OPP, OTP

	AC input	DC output					Total
		+3.3V	+5V	+12V	-12V	+5Vsb	
GES 550 CGR GES-550	200-240V 47-63Hz 6.3A	20A	20A	45.8A	0.3A	3A	550W
		100W		549.6W	3.6W	15W	
GES 650 CGR GES-650		20A	20A	54.1A	0.3A	3A	650W
		100W		649.2W	3.6W	15W	
GES 750 CGR GES-750		20A	20A	62.5A	0.3A	3A	750W
		100W		750W	3.6W	15W	

Connector	Main	CPU	Peripheral	S-ATA	PCI-E
Pin	24 (20+4) Pins	8 (4+4) Pins	4 Pins	5 Pins	8 (6+2) Pins
GES 550	1	2	3	6	2
GES 650	1	2	3	6	4
GES 750	1	2	3	6	4

	GES 550	GES 650	GES 750
Product Number (P/N)	31GB055.0001P	31GB065.0001P	31GB075.0001P
EAN CODE	4710483772283	4710483772290	4710483772306
UPC CODE	192554003290	192554003306	192554003313
JAN CODE	4541995035890	4541995035906	4541995035913

	GES 550	GES 650	GES 750
Individual W/O Packaging Weight (N.Weight)	1.4(kg)	1.45(kg)	1.55(kg)
Individual Packaging Weight (G.Weight)	2.2(kg)	2.25(kg)	2.35(kg)
Individual Size W/O Packaging (LxWxH)	140 x 150 x 86 (mm) / 5.51 x 5.9 x 3.4(in)		
Individual Packaging Size (LxWxH)	510 x 263 x 231 (mm) / 20.1 x 10.4 x 9.1(in)		



youtube.com/COUGARGLOBAL

facebook.com/cougargaming

