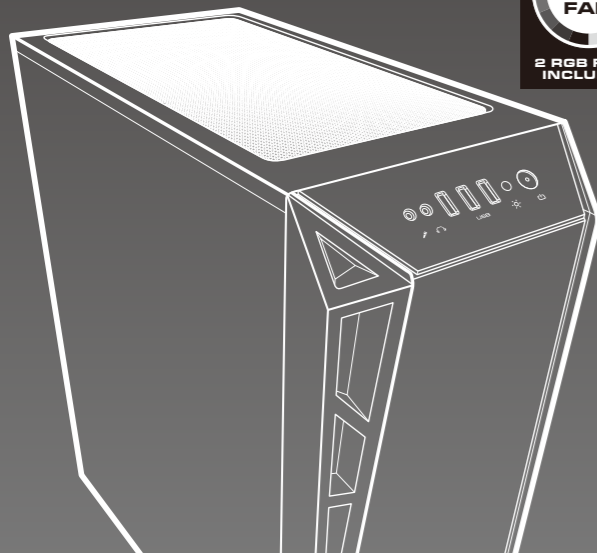




REAL GEAR FOR REAL GAMERS

COUGAR Gaming case

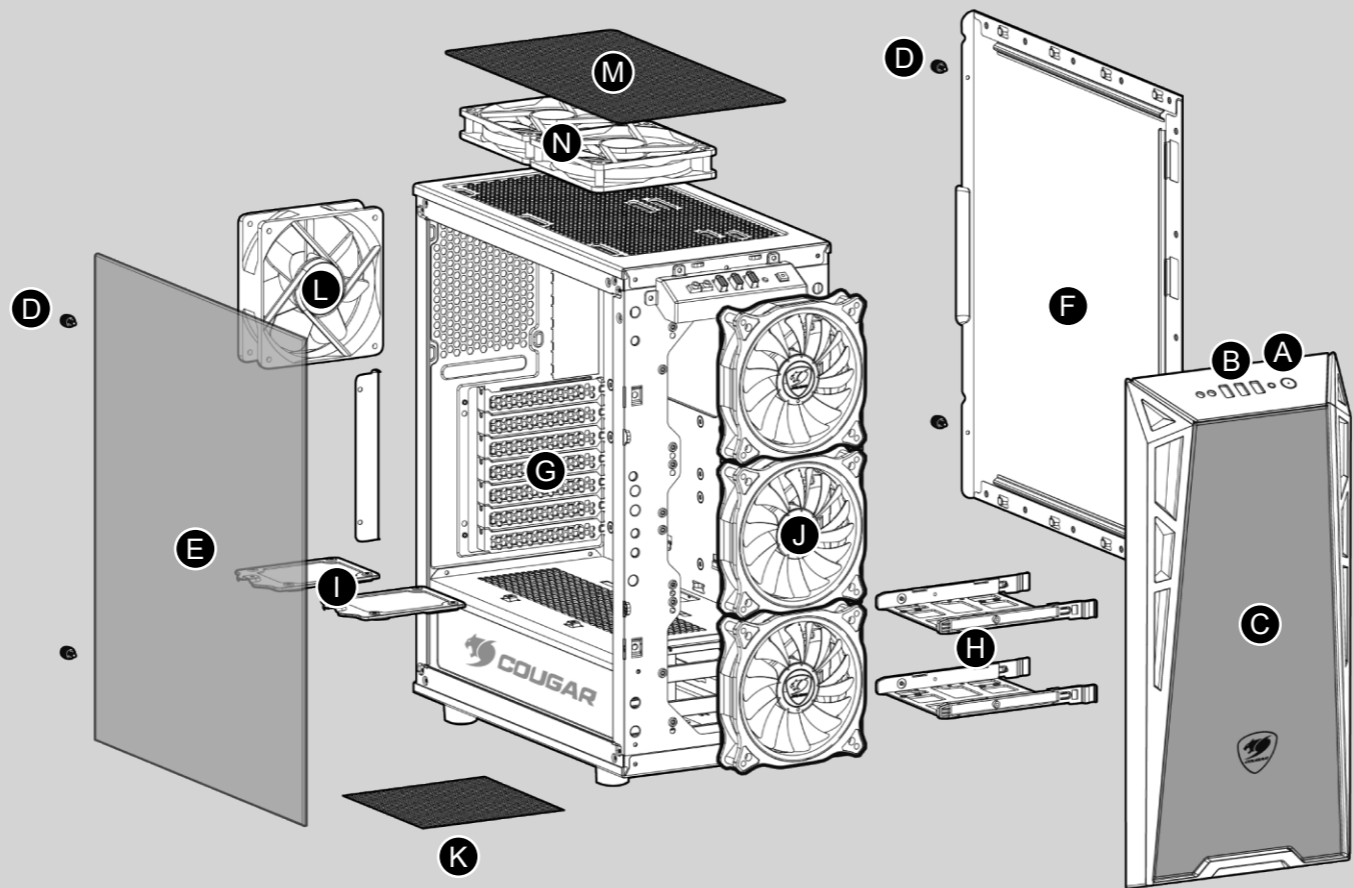
RGB FAN 2 RGB FANS INCLUDED



TURRET

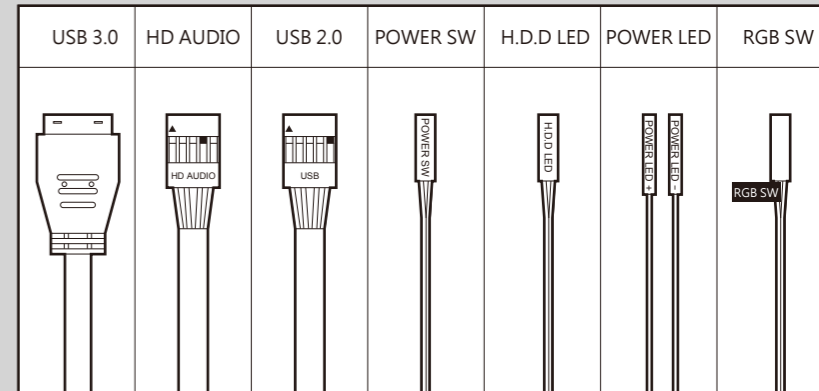
RGB COMPACT GAMING RGB CASE WITH TEMPERED GLASS SIDE WINDOW

Assembly Drawing



- A** Power button / RGB Control Button
- B** USB 3.0 / USB 2.0 / HD audio ports
- C** Front panel
- D** Thumb screws
- E** Tempered glass side cover
- F** Right side cover
- G** Vented slot covers
- H** 3.5" HDD trays (compatible with 2.5" HDD/SSD)
- I** 2.5" HDD/SSD drive bays
- J** 120mm fans x 3 for front panel (Two VORTEX RGB FCB 120 fans pre-installed)
- K** Air filter on bottom cover
- L** 120mm fan for rear panel (optional)
- M** Magnetic fan filter on top cover
- N** 120/140mm fans x 2 for top cover (optional)

Installing the Front I/O Connectors



Turret RGB is an affordable case with top-notch specs. It sports an attractive and compact design with a tempered glass window and includes two powerful Vortex RGB FCB 120 fans. It supports up to three radiators and has a Gaming Vent system to guarantee excellent airflow. It also allows you to install up to three 350mm-long graphics cards. What else can you ask for?

Case Type	Middle Tower
Motherboard Type	Mini ITX / Micro ATX / ATX
Dimension	206 (W) x 461 (H) x 420 (D)mm / 8.11 (W) x 18.14 (H) x 16.53 (D)inch
Case Drive Bays	3.5" : 2 2.5" : 2+2 (Converted from 3.5" Drive Bays)
I/O Panel	USB3.0 x 2 / USB2.0 x 1, Mic x 1, Audio x 1, RGB Control Button
RGB Lighting Control	Yes
Cooling Fan Support	Front : 120mm x 3 / 140mm x 2 (Two VORTEX RGB FCB 120 Fans Pre-installed) Top : 120/140mm x 2 Rear : 120mm x 1
Water Cooling Radiator Support	Front : 360mm / 240mm / 120mm Top : 120/240mm (Max Component Height on Motherboard 40mm) Rear : 120mm
Expansion Slots	7
Max. Graphic Card Length	350mm / 13.8 inch
Max. CPU Cooler Height	160mm / 6.3 inch
PSU	Standard ATX PS2

Specifications might vary depending on the country or region of sale.

Accessory Kit

	For PSU & Expansion Card	X 8		For Motherboard & HDD	X 17
	For Fans	X 12		For SSD	X 16
	For Fans	X 4		Cable ties	X 4

COUGAR USA Technical Service
Tel: (833) 256-3778
Mail: rma@compucaseusa.com
https://cougargaming.com/support/contact/upload/

For more information, please visit
www.cougargaming.com
Compucase Enterprise Co.,Ltd.
All rights reserved.

Compucase Enterprise Co.,Ltd.
No. 225, Lane 54, An Ho Road Sec. 2 Tainan, Taiwan, R.O.C
Tel:+886-6-356-0606
Service E-Mail:service@cougargaming.com



ENGLISH

- Massive Tempered Glass Side Window and Transparent Front Cover
- Supports Three Radiators (Frontal: 360mm, Top: 240mm, Rear: 120mm)
- RGB Lighting: Two Vortex RGB FCB 120 fans and COUGAR Core Box C Included
- Gaming Vent System: Improved Cooling with Greater Airflow
- Power Gaming: Supports Three 350mm-Long Graphics Cards
- Supports Two 3.5" HDDs (or Two Additional 2.5" SSDs) and Two 2.5" SSDs

ESPAÑOL

- Gran Ventana de Vidrio Templado y Cubierta Frontal Transparente
- Soporta Tres Radiadores (Frontal: 360mm, Superior: 240mm, traseira: 120mm)
- Iluminación RGB: Incluye Dos Ventiladores Vortex RGB FCB 120 y una COUGAR Core Box C
- Sistema Gaming Vent: Mejor Flujo de Aire
- Hasta Tres Tarjetas Gráficas de 350mm
- Soporta Dos HDD de 3.5" (convertibles a dos SSD de 2.5" adicionales) y Dos SSD de 2.5"

PORTUGUÊS

- Enorme janela lateral de vidro temperado e tampa frontal transparente
- Suporta três radiadores (Frontal:360 mm, topo:240 mm, traseira:120 mm)
- Iluminação RGB:Dois ventiladores Vortex RGB FCB 120 e COUGAR Core Box C incluídos
- Sistema de ventilação para gaming:Melhor refrigeração com maior fluxo de ar
- Gaming poderoso:Suporta três placas gráficas com 350 mm de comprimento
- Suporta dois HDD de 3,5" (ou dois SSDs de 2,5" adicionais) e dois SSDs de 2,5"

РУССКИЙ

- Массивное боковое окно из закаленного стекла и прозрачная передняя крышка
- Поддерживает три радиатора (фронтальный: 360 мм, верх: 240 мм, сзади: 120 мм)
- Подсветка RGB: два вентилятора Vortex RGB FCB 120 и COUGAR Core Box C в комплекте
- Система игрового вентиля: улучшенное охлаждение с большим потоком воздуха
- Мощная игра: поддерживает три графических карты длиной 350 мм
- Поддерживает два 3.5" жестких диска (или два дополнительных 2.5" SSD) и два 2.5" SSD

ITALIANO

- Finestra laterale in vetro temperato e coperchio frontale trasparente
- Supporta tre radiatori (frontale: 360 mm, superiore: 240 mm, posteriore: 120 mm)
- Illuminazione RGB: due ventilatori Vortex RGB FCB 120 e COUGAR Core Box C incluse
- Sistema di ventilazione per gaming: migliore raffreddamento con maggiore flusso d'aria
- Potente gaming: supporta tre schede grafiche da 350 mm
- Supporta due HDD da 3,5" (o due SSD aggiuntivi da 2,5") e due SSD da 2,5"

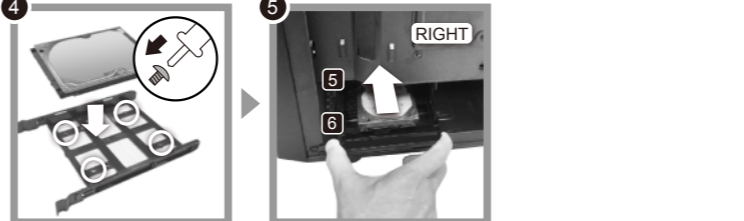
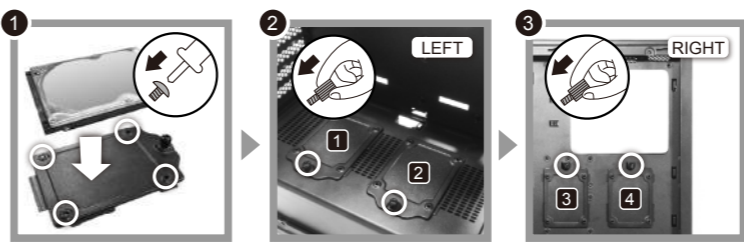
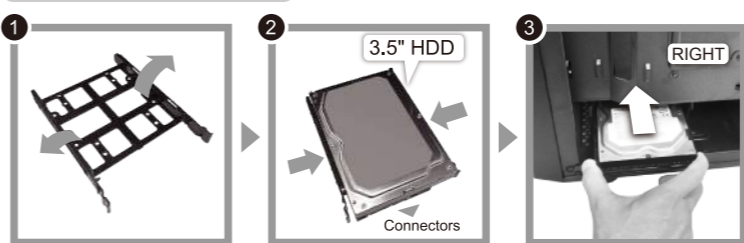
تعليمات التركيب و الأمان:
 عند التركيب أو التفكيك يجب التأكد من أن جميع الأسلاك مغلولة عن الكهرباء.
 يجب اتخاذ الاحتراطات اللازمة لمنع الصعق الكهربائي.
 من يقوم بعملية التركيب الشخص المختص فقط.
 يجب إرتداء الملابس المناسبة أثناء تركيب/تجميع الكمبيوتر.

ДАТА ИЗГОТОВЛЕНИЯ ПРОДУКЦИИ
 год и месяц изготовления продукции указаны в серийном номере продукта.
 (существует 2 способа определения даты изготовления, оба способа описаны ниже)

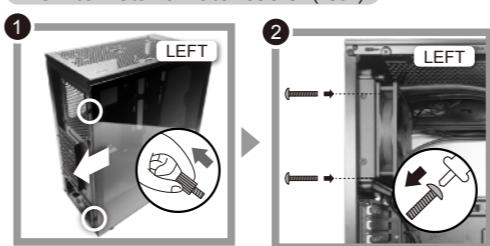
- A** После S/N: первые две цифры означают год, вторые две – месяц изготовления.
Например, S/N: H1702000001 означает, что товар был произведен в феврале 2017 года.
- B** После S/N: если указаны буквы, то две буквы представляют цифры из таблицы ниже, и означают год, последующие две цифры – месяц изготовления.
Например, S/N: DAG02REVI000001 означает, что товар был произведен в феврале 2017 года.

A	B	C	D	E	F	G	H	I	J	
1	2	3	4	5	6	7	8	9	0	• Например, AG = 17 = 2017 год

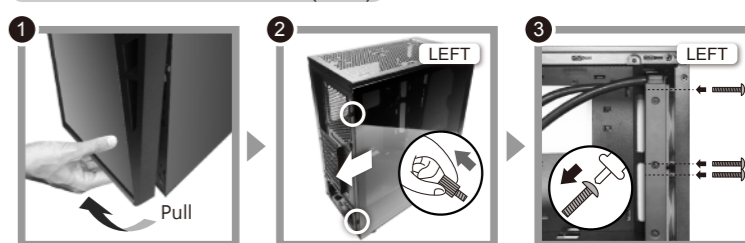
How to install a 3.5" HDD



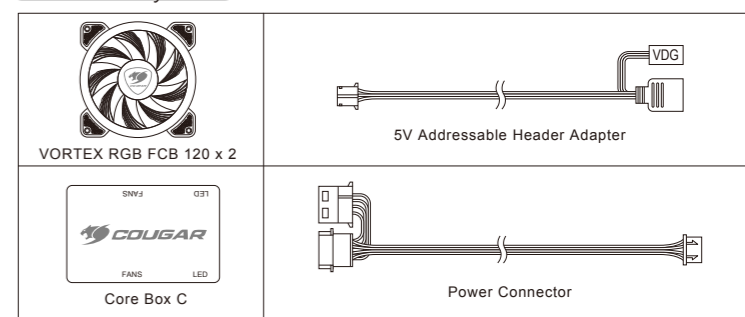
How to install a water cooler (rear)



How to install a water cooler (front)



Fan control system



Mode 1: Press the RGB Control Button to Select the Next Lighting Effect.
 Mode 2: Press and Hold the RGB Control Button for Three to Five Seconds to Switch to Control through your Motherboard's Driver for System-wide RGB Synchronization*or vice-versa.

* This applies only to RGB devices connected to the COUGAR Core Box C. Motherboard driver control is only available when the Core Box C is properly connected to a compatible motherboard's 5v addressable RGB header.

